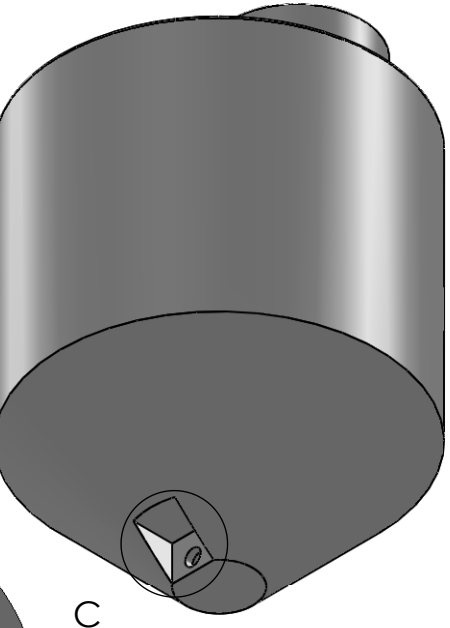
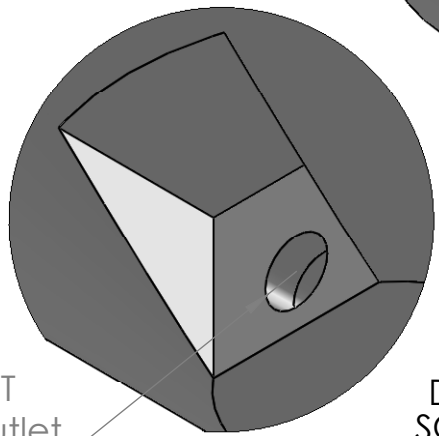
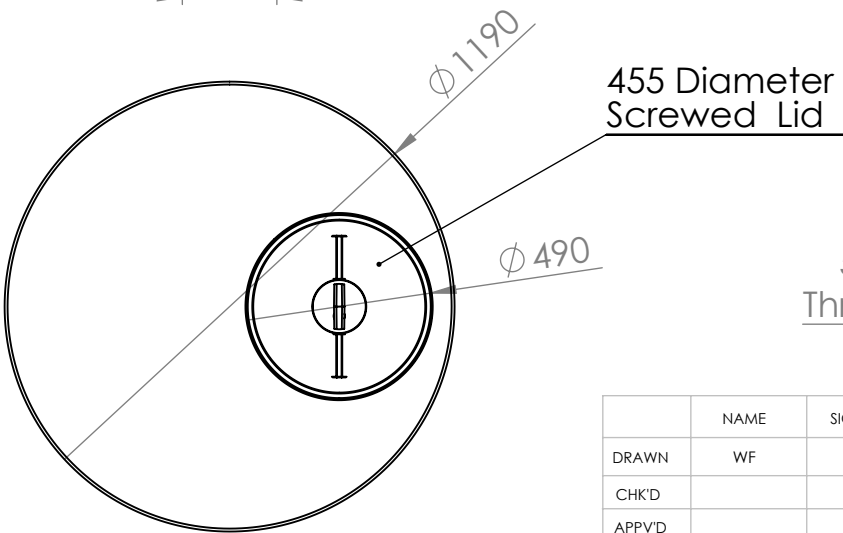


| PART NUMBER | Wall Height | Weight | Overall Height |
|-------------|-------------|--------|----------------|
| SP500CB | 310 | 25 kg | 930 |
| SP800CB | 595 | 40 kg | 1215 |
| SP1200CB | 950 | 55 kg | 1570 |



DETAIL C
SCALE 1 : 5

| | | | | |
|--------|------|-----------|---------------|-----------------------------|
| | NAME | SIGNATURE | DRAWN DATE | 18/11/2011 |
| DRAWN | WF | | REVISION | - |
| CHK'D | | | REVISION DATE | - |
| APPV'D | | | Material | LLDPE |
| MFG | | | WEIGHT | |
| Q.A | | | RM Code | SP500CB, SP800CB & SP1200CB |

| | |
|--|--|
| Rota Moulding Ph 92501125 | |
| SP500, SP800 & SP1200 Itr Cone Bottom Tank with 455 Diameter Screwed Lid | |
| TITLE: | |
| DWG NO. | |
| UNLESS OTHERWISE SPECIFIED: DIMENSIONS ARE IN MILLIMETERS | |

A4

Thursday, 8 December 2011 11:20:27 AM