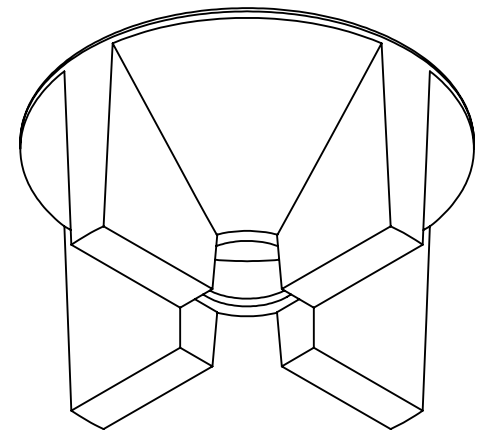


SECTION D-D



	NAME	SIGNATURE	DRAWN DATE	29-Aug-17
DRAWN			REVISION	
CHK'D			REVISION DATE	
APPV'D			Material	
MFG			WEIGHT	kg
Job #			RM Code	SP801CBPOLY
There is a possibility of a + or -1% dimensional variation in rotational moulded Plastic products				
DEBUR AND BREAK SHARP EDGES				

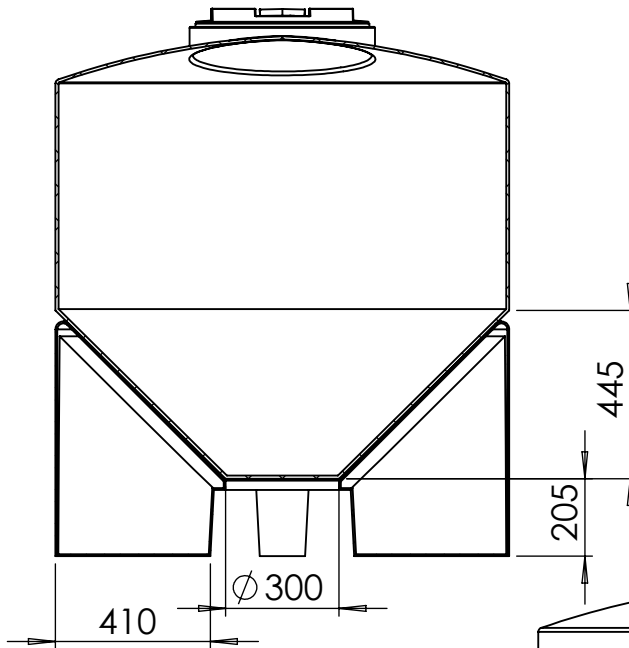
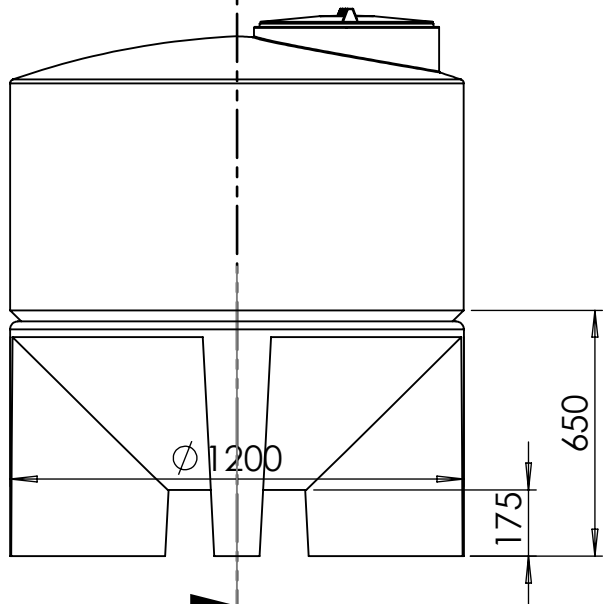
Rota Moulding Ph 92501 125

TITLE:
DWG NO.

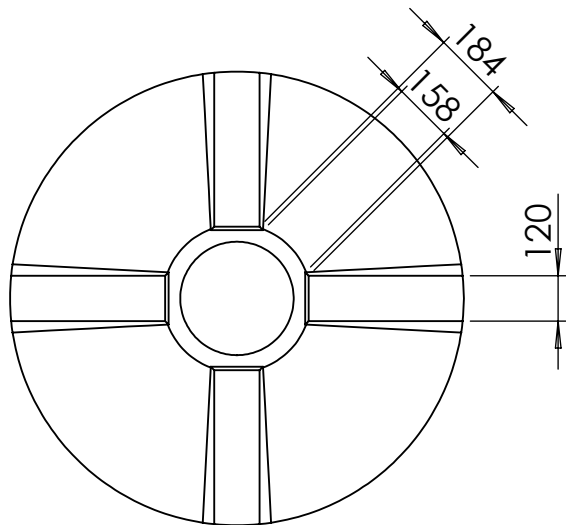
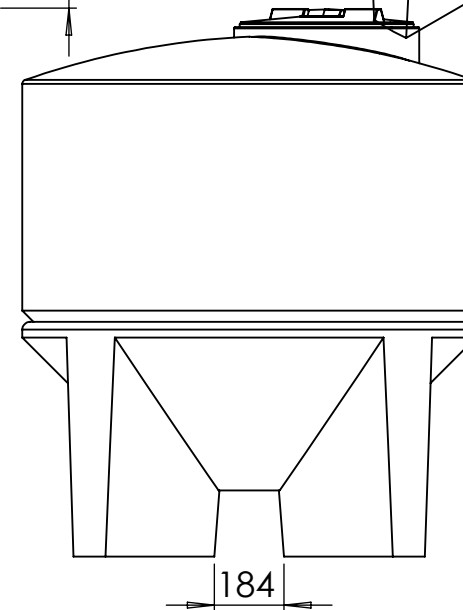
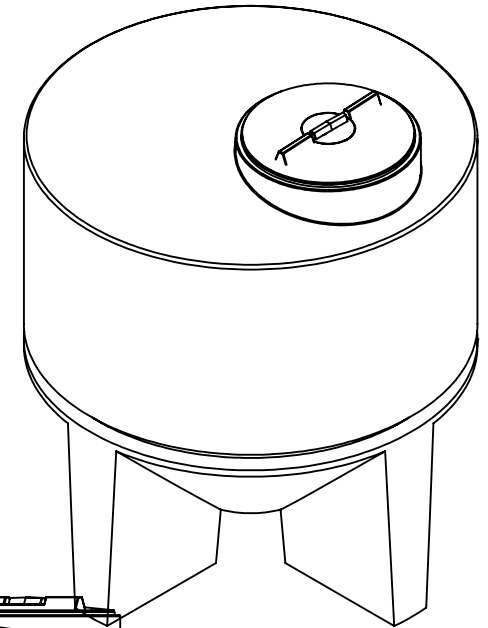
A4

Tuesday, December 19, 2017 4:21:17 PM

UNLESS OTHERWISE SPECIFIED: DIMENSIONS ARE IN MILLIMETERS
SCALE 1:20 DO NOT SCALE DRAWING SHEET 1 OF 11

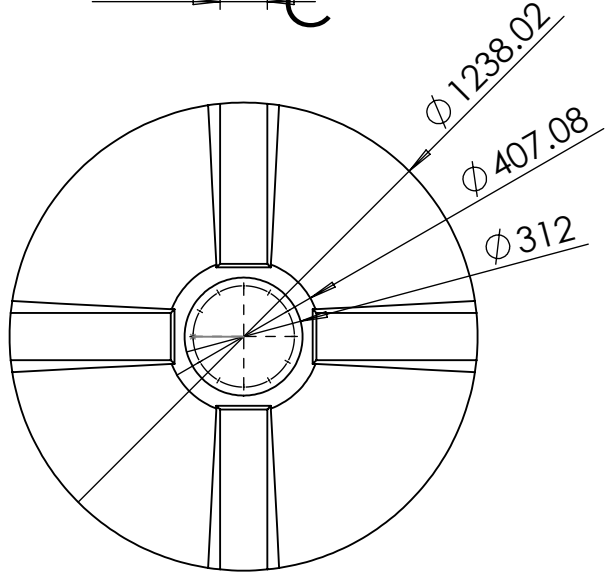
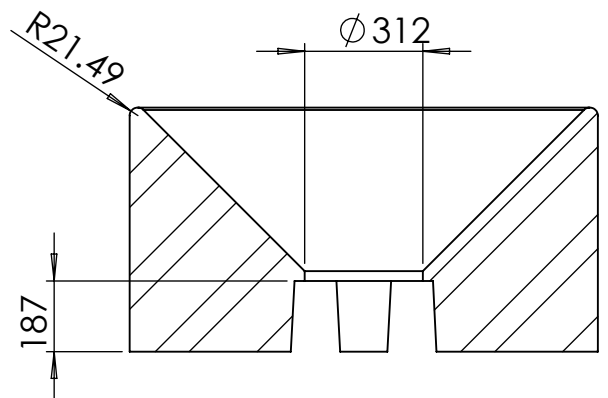
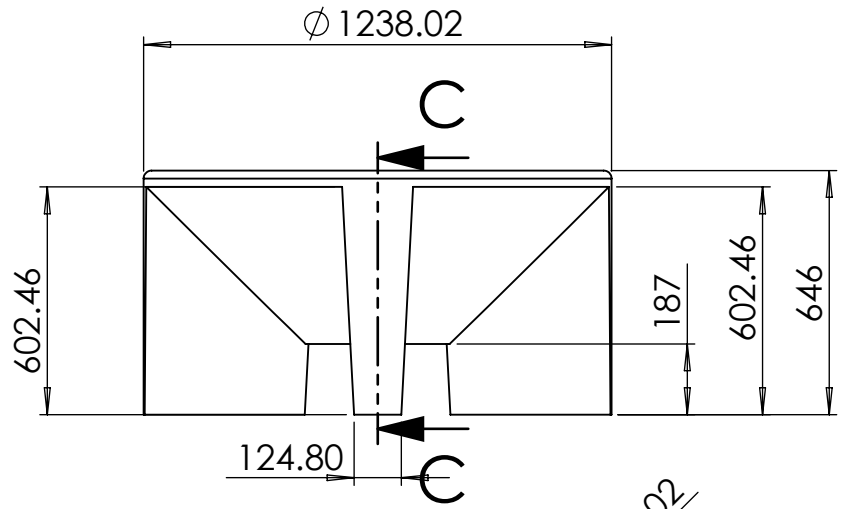


SECTION B-B



Tuesday, December 19, 2017 4:21:17 PM

	NAME	SIGNATURE	DRAWN DATE	18-Nov-11	Rota Moulding Ph 92501125 SP800CB Bottom Outlet on SP801CBPoly	
DRAWN	WF		REVISION	A		
CHK'D	No		REVISION DATE	04-Apr-17	TITLE: DWG NO.	
APPV'D			Material	LLDPE		
MFG			WEIGHT	61887.04 kg	LESS OTHERWISE SPECIFIED: DIMENSIONS ARE IN MILLIMETERS	
Job #			RM Code	SP800CB Bottom Outlet on SP801CBPoly		
There is a possibility of a + or -1% dimensional variation in rotational moulded Plastic products			DEBUR AND BREAK SHARP EDGES	SCALE 1:20	DO NOT SCALE DRAWING	A4

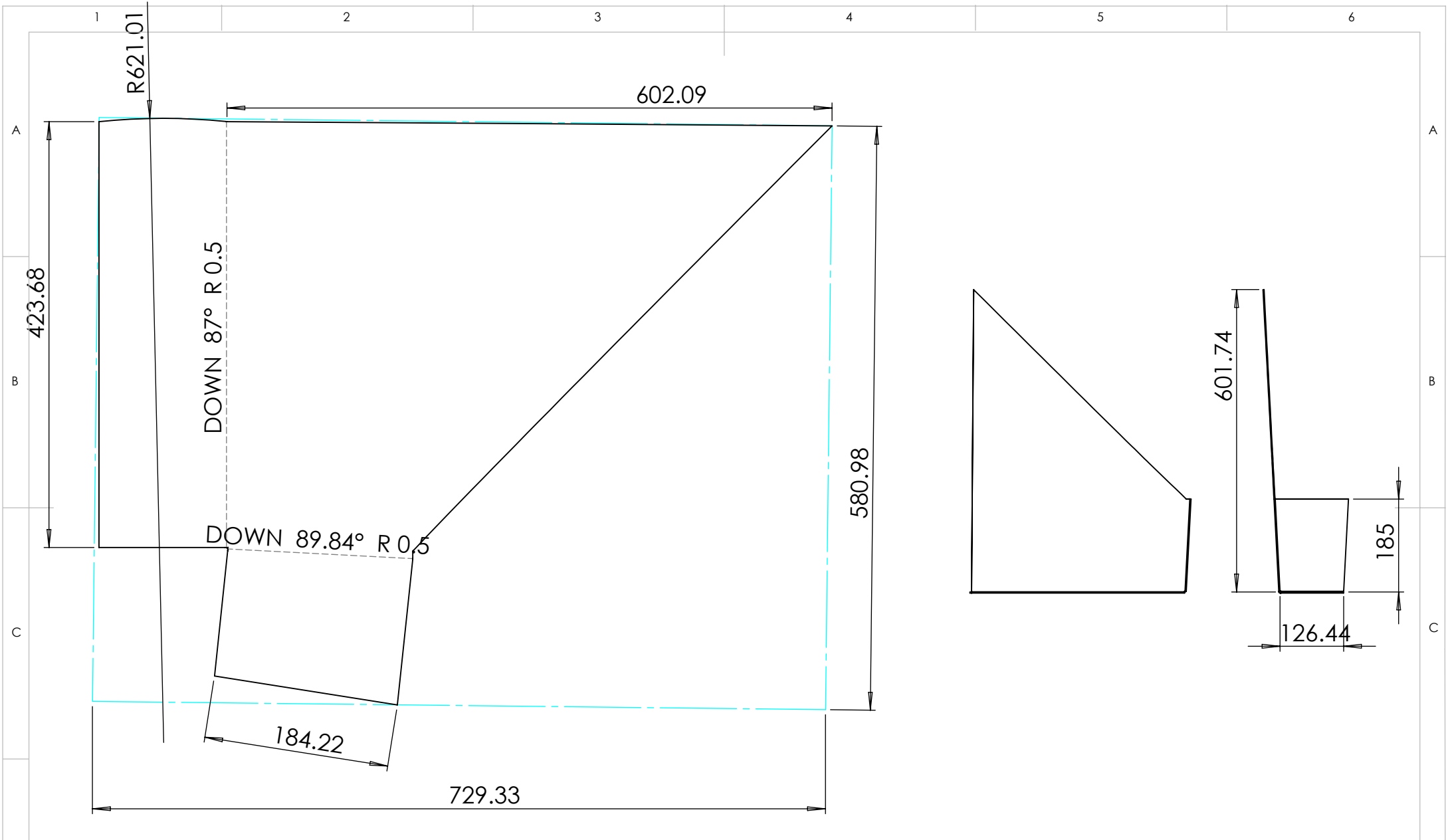


Tuesday, December 19, 2017 4:21:17 PM

	NAME	SIGNATURE	DRAWN DATE	29-Aug-17
DRAWN			REVISION	
CHK'D	No		REVISION DATE	
APPV'D			Material	Plain Carbon Steel
MFG			WEIGHT	1388.07 kg
Job #			RM Code	Mould
There is a possibility of a + or -1% dimensional variation in rotational moulded Plastic products			DEBUR AND BREAK SHARP EDGES	

Rota Moulding Ph 92501125 SP801CB Poly Inside Mould dimensions		TITLE:	A4
UNLESS OTHERWISE SPECIFIED: DIMENSIONS ARE IN MILLIMETERS		SCALE 1:20	SHEET 3 OF 11

DO NOT SCALE DRAWING



Tuesday, December 19, 2017 4:21:17 PM

	NAME	SIGNATURE	DRAWN DATE	29-Aug-17
DRAWN			REVISION	
CHK'D	No		REVISION DATE	
APPV'D			Material	Plain Carbon Steel
MFG			WEIGHT	3.86 kg
Job #			RM Code	Leg SheetmetalSM-FLAT-PATTERN
There is a possibility of a + or -1% dimensional variation in rotational moulded Plastic products				
DEBUR AND BREAK SHARP EDGES				

Rota Moulding Ph 92501125
 SP801CBPoly Mould Leg flatten

TITLE:

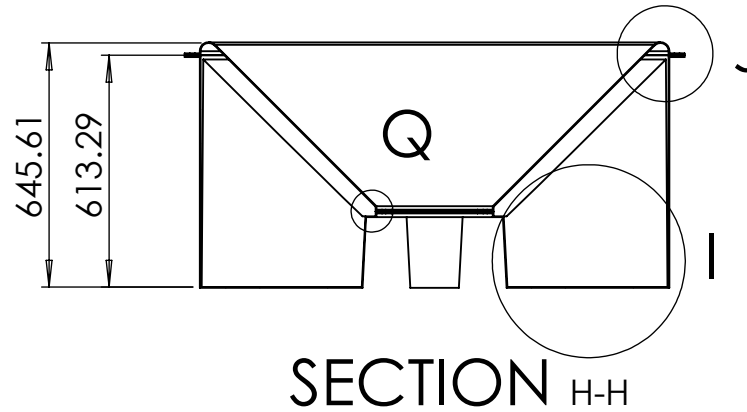
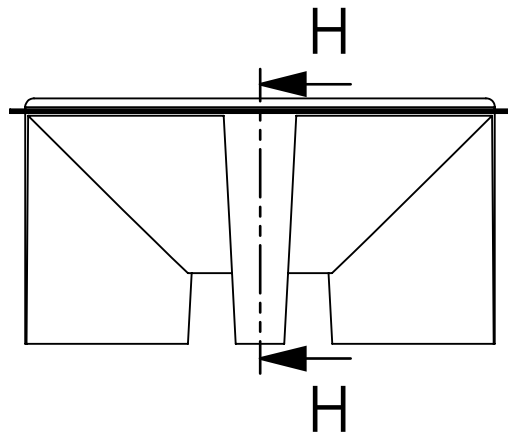
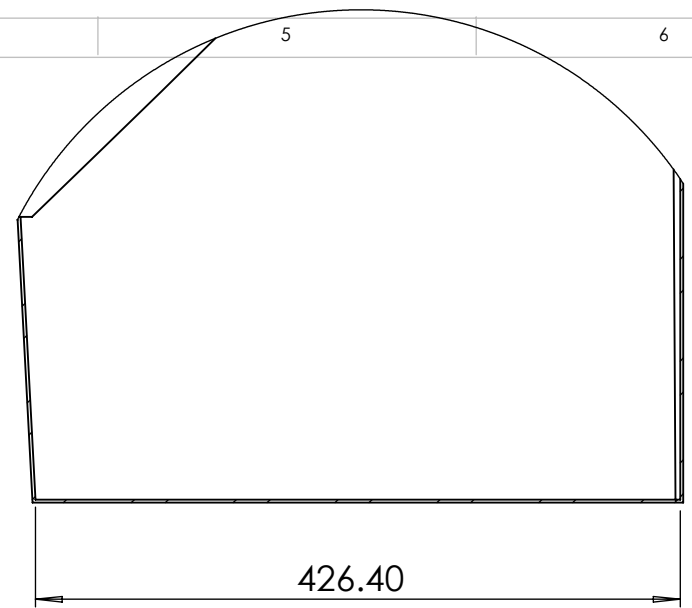
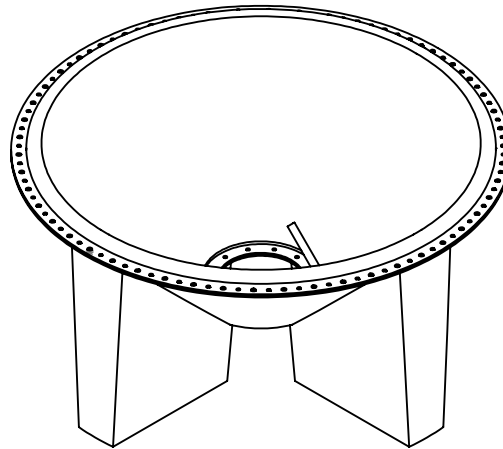
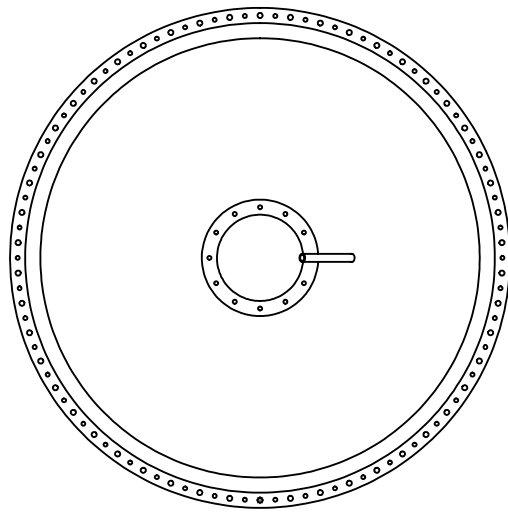
DWG NO.

UNLESS OTHERWISE SPECIFIED: DIMENSIONS ARE IN MILLIMETERS

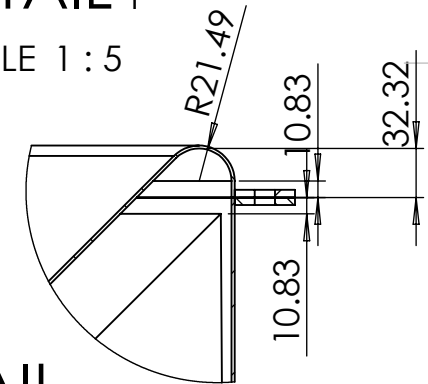
SCALE 1:5 DO NOT SCALE DRAWING

SHEET 4 OF 11

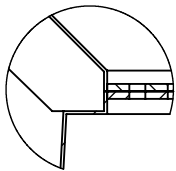
A4



DETAIL I
SCALE 1 : 5



DETAIL J
SCALE 1 : 5

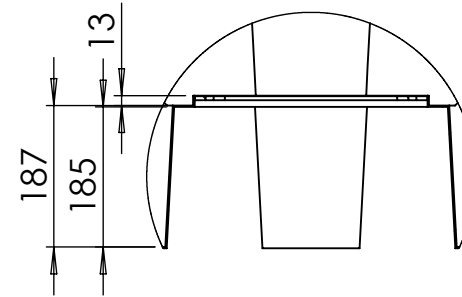
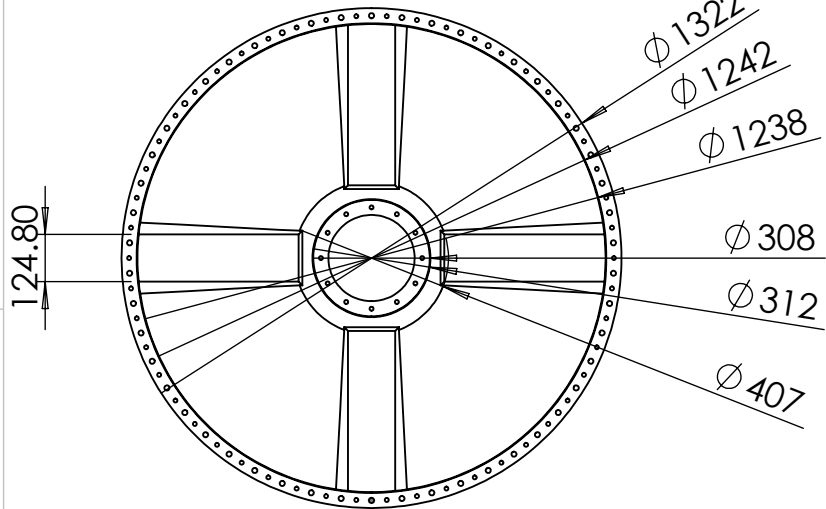


DETAIL Q
SCALE 1 : 5

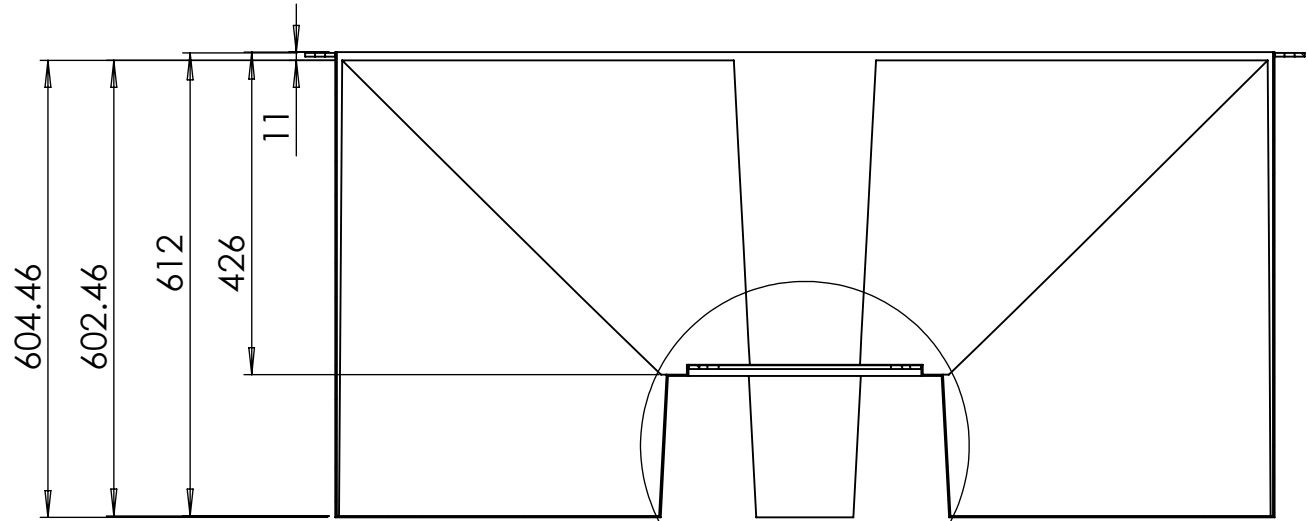
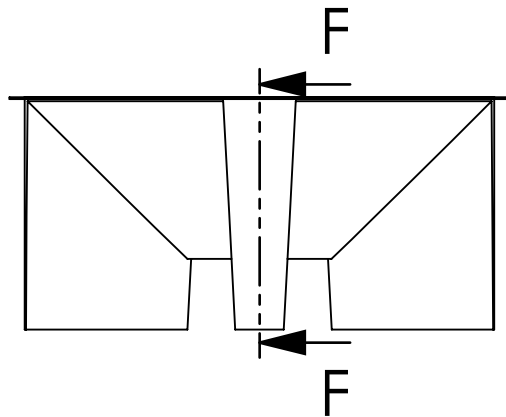
Tuesday, December 19, 2017 4:21:17 PM

	NAME	SIGNATURE	DRAWN DATE	30-Nov-17
DRAWN			REVISION	
CHK'D	No		REVISION DATE	
APPV'D			Material	
MFG			WEIGHT	91517.84 kg
Job #			RM Code	Mould Ass together
There is a possibility of a + or -1% dimensional variation in rotational moulded Plastic products				
DEBUR AND BREAK SHARP EDGES				

Rota Moulding Ph 92501125 SP801CBPOLY Mould Ass		A4
UNLESS OTHERWISE SPECIFIED: DIMENSIONS ARE IN MILLIMETERS		
SCALE 1:20 DO NOT SCALE DRAWING		SHEET 5 OF 11



DETAIL G
SCALE 1 : 10



SECTION F-F
SCALE 1 : 10

G

	NAME	SIGNATURE	DRAWN DATE	30-Nov-17
DRAWN			REVISION	
CHK'D	No		REVISION DATE	
APPV'D			Material	
MFG			WEIGHT	58217.74 kg
Job #			RM Code	Mould Ass bottom only

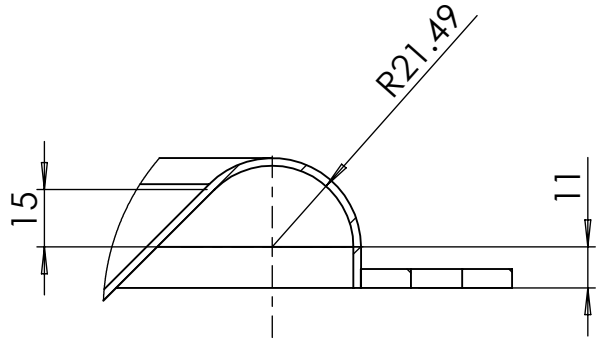
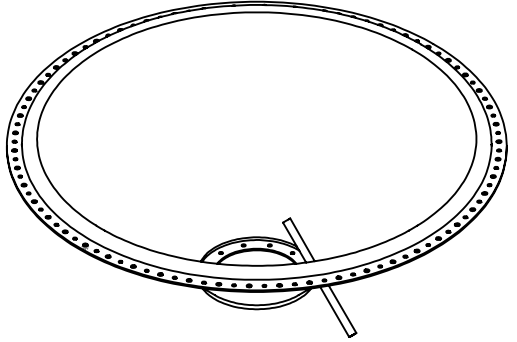
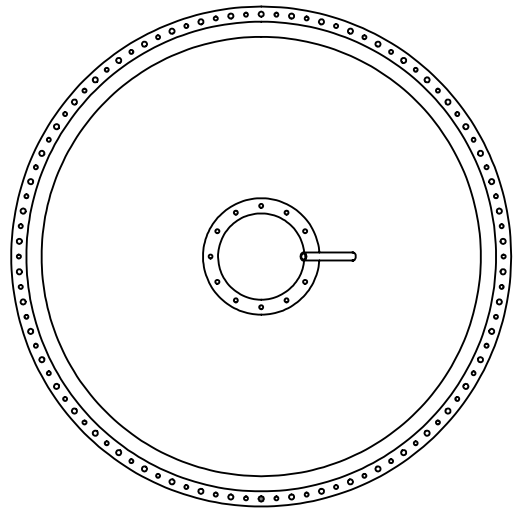
Rota Moulding Ph 92501125	
SP801CBPOLY Mould Bottom Half	
TITLE:	
DWG NO.	
UNLESS OTHERWISE SPECIFIED: DIMENSIONS ARE IN MILLIMETERS	
SCALE 1:20	DO NOT SCALE DRAWING

A4

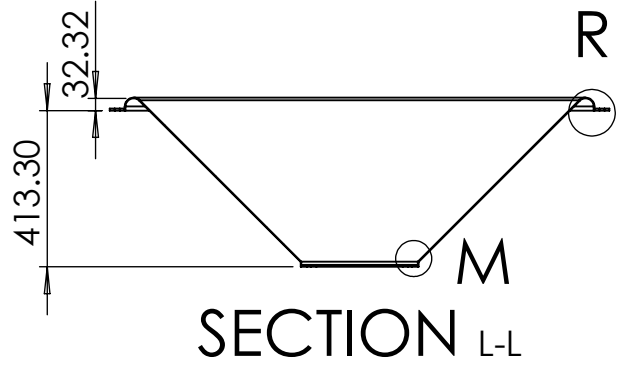
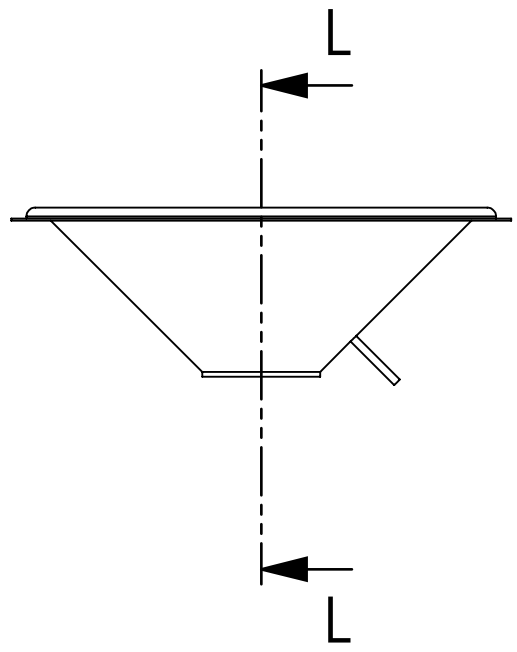
Tuesday, December 19, 2017 4:21:17 PM

There is a possibility of a + or -1% dimensional variation in rotational moulded Plastic products
DEBUR AND BREAK SHARP EDGES

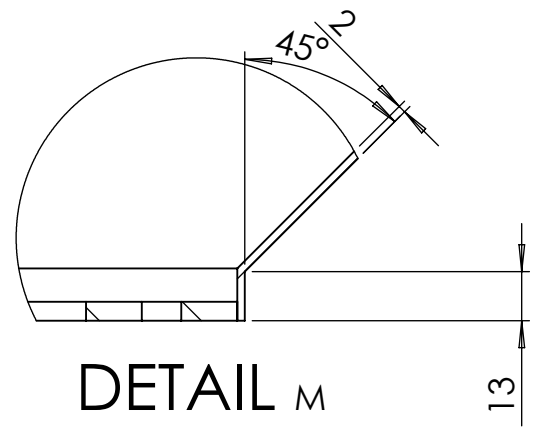
SHEET 6 OF 11



DETAIL R
SCALE 1 : 2



SECTION L-L

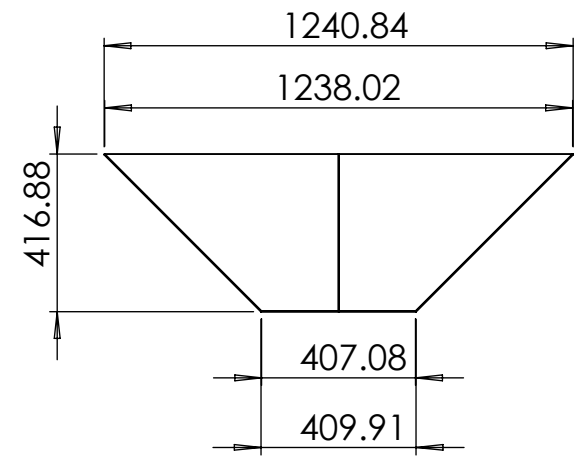
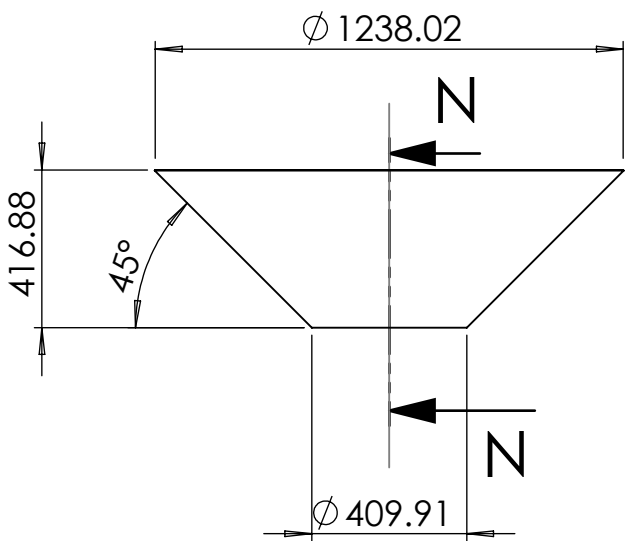
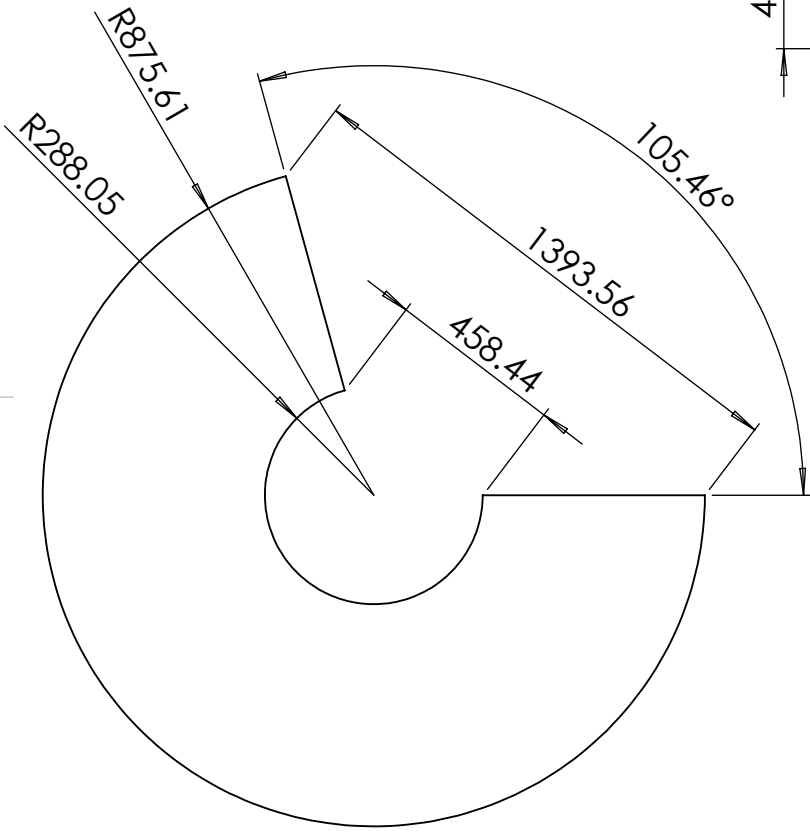


DETAIL M
SCALE 1 : 2

Tuesday, December 19, 2017 4:21:17 PM

	NAME	SIGNATURE	DRAWN DATE	30-Nov-17
DRAWN			REVISION	
CHK'D	No		REVISION DATE	
APPV'D			Material	
MFG			WEIGHT	33300.10 kg
Job #			RM Code	Mould Ass Top only
There is a possibility of a + or -1% dimensional variation in rotational moulded Plastic products			DEBUR AND BREAK SHARP EDGES	

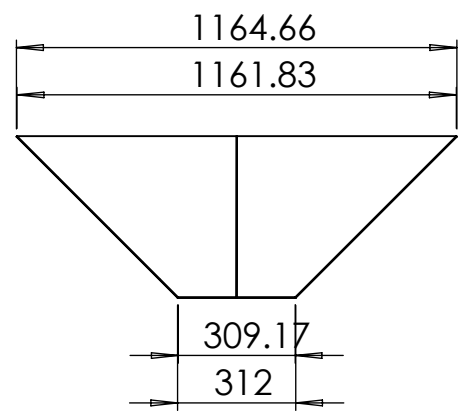
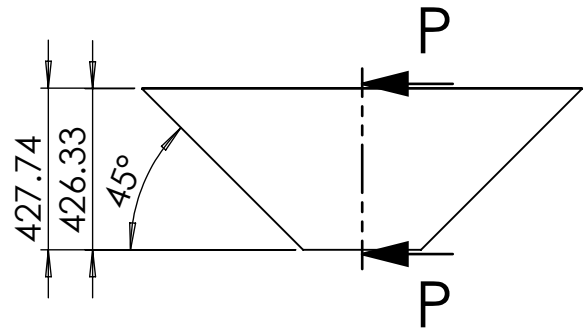
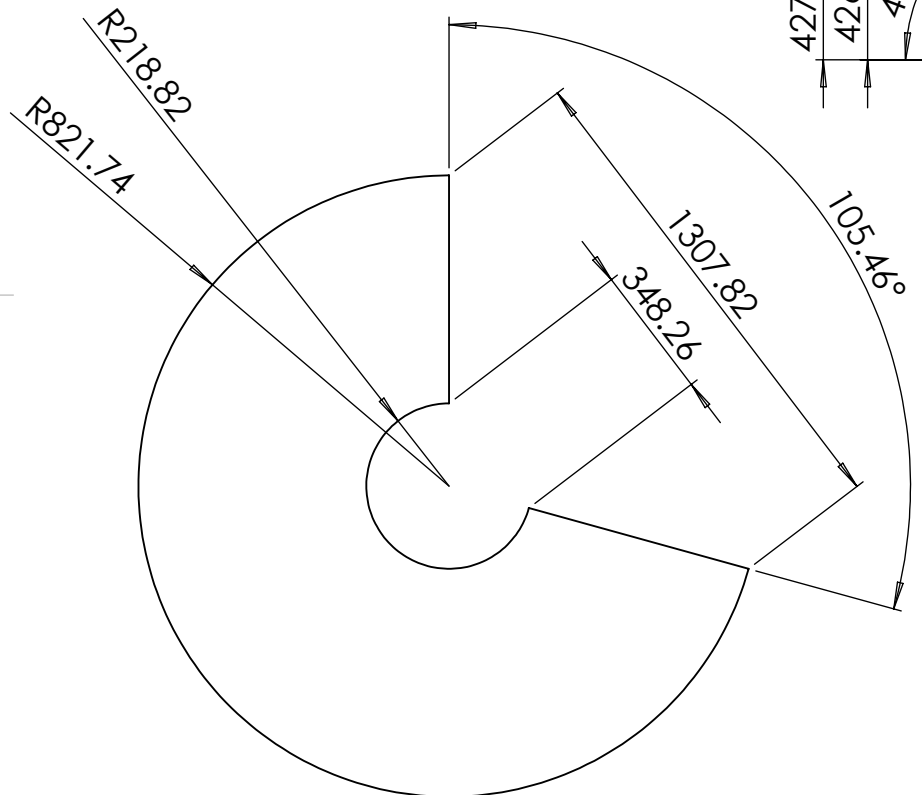
<p>Rota Moulding Ph 92501125 SP801CBPOLY Mould Top Half</p>		<p>TITLE:</p>	<p>A4</p>
<p>UNLESS OTHERWISE SPECIFIED: DIMENSIONS ARE IN MILLIMETERS</p>			<p>SHEET 7 OF 11</p>
<p>SCALE 1:20</p>	<p>DO NOT SCALE DRAWING</p>	<p></p>	



SECTION N-N

Tuesday, December 19, 2017 4:21:17 PM

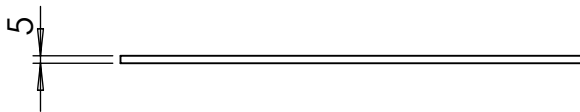
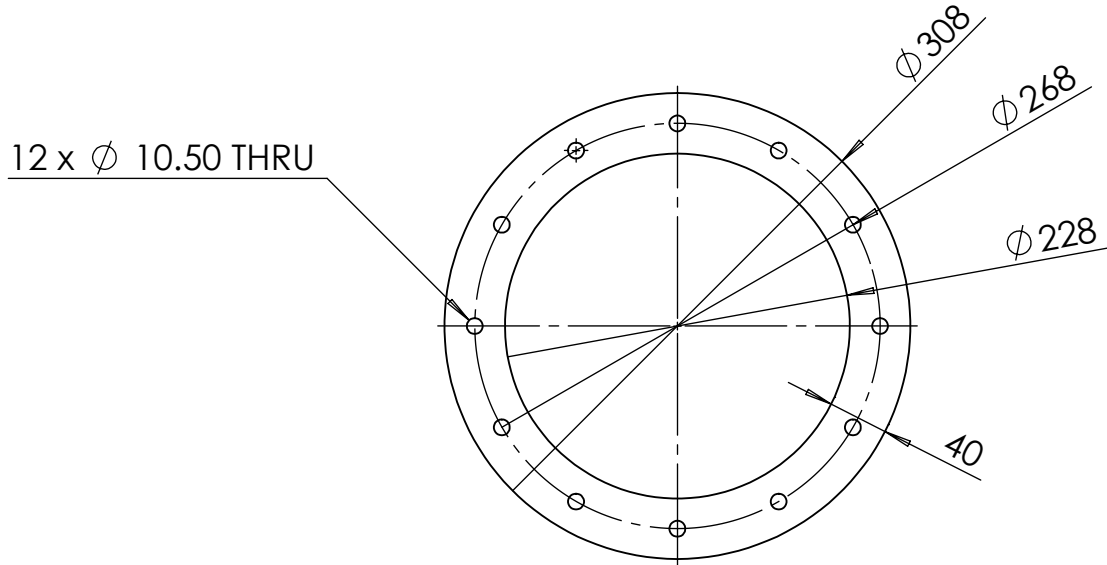
	NAME	SIGNATURE	DRAWN DATE	29-Aug-17	Rota Moulding Ph 92501125 Mould Bottom Cone		TITLE:
DRAWN			REVISION				
CHK'D	No		REVISION DATE		DWG NO.		A4
APPV'D			Material	Plain Carbon Steel			
MFG			WEIGHT	23.69 kg	OTHERWISE SPECIFIED: DIMENSIONS ARE IN MILLIMETERS		
Job #			RM Code	Cone Section Bottom half			
There is a possibility of a + or -1% dimensional variation in rotational moulded Plastic products				DEBUR AND BREAK SHARP EDGES	SCALE 1:20	DO NOT SCALE DRAWING	SHEET 8 OF 11



SECTION P-P

Tuesday, December 19, 2017 4:21:17 PM

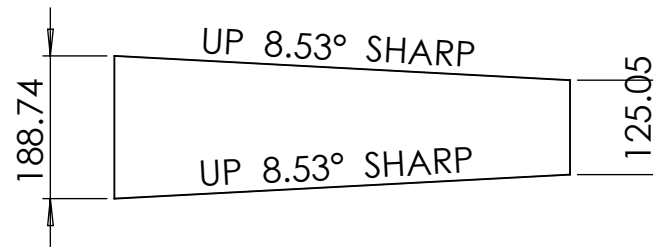
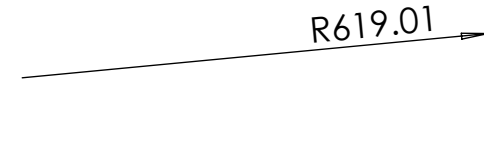
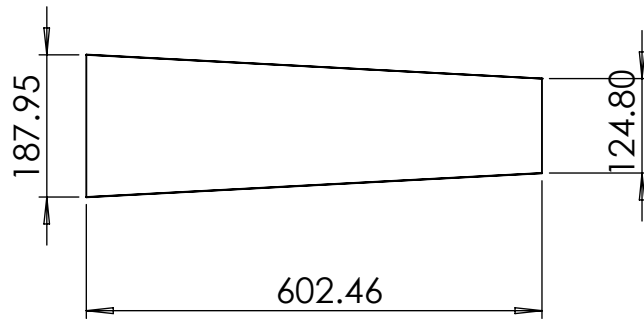
	NAME	SIGNATURE	DRAWN DATE	29-Aug-17	Rota Moulding Ph 92501125 Mould Top Cone		
DRAWN			REVISION				
CHK'D	No		REVISION DATE		TITLE:		
APPV'D			Material	Plain Carbon Steel			
MFG			WEIGHT	0.00 kg	DWG NO.		
Job #			RM Code	Top Half MouldSM-FLAT-PATTERN	UNLESS OTHERWISE SPECIFIED: DIMENSIONS ARE IN MILLIMETERS		
There is a possibility of a + or -1% dimensional variation in rotational moulded Plastic products				DEBUR AND BREAK SHARP EDGES	SCALE 1:20	DO NOT SCALE DRAWING	A4
							SHEET 9 OF 11



Tuesday, December 19, 2017 4:21:17 PM

	NAME	SIGNATURE	DRAWN DATE	29-Aug-17	Rota Moulding Ph 92501125 Centre Flange - SP801 CB Poly Stand Mould	
DRAWN			REVISION			
CHK'D	No		REVISION DATE			
APPV'D			Material	Plain Carbon Steel	TITLE:	
MFG			WEIGHT	1.27 kg	DWG NO.	
Job #			RM Code	Flange Centre	UNLESS OTHERWISE SPECIFIED: DIMENSIONS ARE IN MILLIMETERS	
There is a possibility of a + or -1% dimensional variation in rotational moulded Plastic products			DEBUR AND BREAK SHARP EDGES		SCALE 1:5	DO NOT SCALE DRAWING
						SHEET 10 OF 11

A4



Tuesday, December 19, 2017 4:21:17 PM

	NAME	SIGNATURE	DRAWN DATE	29-Aug-17
DRAWN			REVISION	
CHK'D	No		REVISION DATE	
APPV'D			Material	Plain Carbon Steel
MFG			WEIGHT	1132.49 kg
Job #			RM Code	Leg Out Side Curve
There is a possibility of a + or -1% dimensional variation in rotational moulded Plastic products			DEBUR AND BREAK SHARP EDGES	

Rota Moulding Ph 92501125 SP801CBPOLY Mould Curve leg section		TITLE:	A4
SCALE 1:10	DO NOT SCALE DRAWING	SHEET 11 OF 11	